



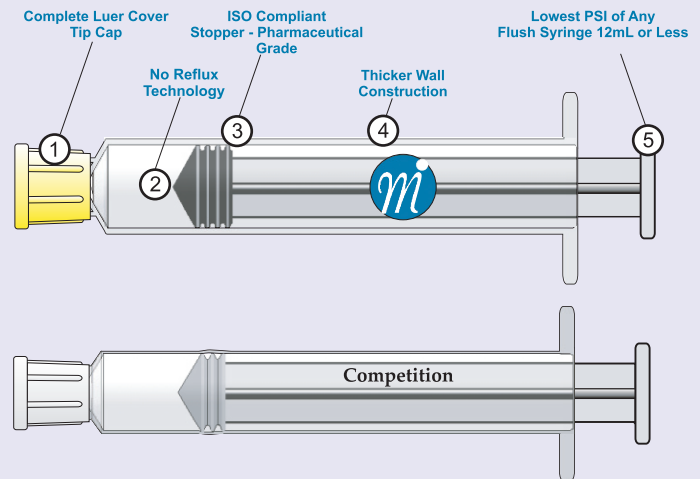
# MEDEFIL, INC.

Why Should I Choose MedeFlush™?

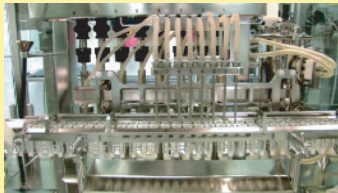
- No Reflux Post Flushing = Lower Catheter Occlusion
- ISO Compliant Syringe = Helping your Institution Stay Compliant
- Pharmaceutical Grade Syringe = Syringe Designed for the Pre-Filled Application
- Quality Plastics = No Barrel Distortion = Helps in Maintaining Solution & its Pathway Sterile
- Plunger Stopper with Four Rings = ISO Requirements for a Pre-Filled Syringe
- Terminally Sterilized Product = Contributes to Patient Safety
- Great Pricing

## MedeFlush™ Features:

- Contains No Preservatives, Not made with Natural Rubber Latex & DEHP
- Color-Coded Tip Caps and Labels for easier Identification and/or helps Decreased Medication Errors
- Clear Plastic Syringes for Better Visibility of Syringe Contents
- 6mL & 12mL Syringes with Same Large Diameter
- State-of-the-Art Fully Automated Facility
- Minimal Human Interface during Manufacturing Process
- State-of-the-Art Injectables Solution Formulation Plant
- Bar Code, NDC & Catalog Number on Each Syringe
- Two Year Expiry Dating
- Lot Number & Expiration Date on Each Syringe
- Terminally Sterilized with Steam (SAL 10<sup>-6</sup>)
- Compatible with Needleless and I. V. Access Systems



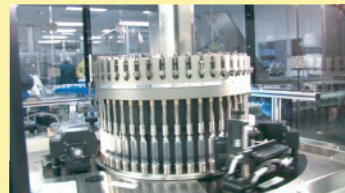
## State-of-the-Art Manufacturing



Filling



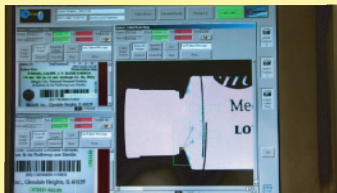
Terminal Sterilization



Inspection



Labeling



Graduation and Label QC



Packaging

MedeFlush™ larger barrel diameter creates a smooth flow of flush solution with less pressure per square inch. Good for reduced flow catheters. All this with NO REFLUX technology.

MedeFlush™ pre-filled syringes are manufactured in accordance with the applicable provisions of 21 Code of Federal Regulations (CFR) including Current Good Manufacturing Practices (cGMP) and Quality Control Requirements.

Learn more about Medefil's **MedeFlush™** Products  
 Please call (630) 682-4600 or via e-mail at: [info@medefilinc.com](mailto:info@medefilinc.com)  
 Visit the company's website at [www.medefilinc.com](http://www.medefilinc.com)

## Products and Packaging

### Normal Saline I. V. Flush Syringes [0.9% Sodium Chloride Injection] 510(k) K091583

Catalog #	NDC Number	Description	Box / Case Quantity
MIS-1123	64253-0111-23	3mL fill in 6mL Syringe	60/Box, 960/case
MIS-1125	64253-0111-25	5mL fill in 6mL Syringe	60/Box, 960/case
MIS-1133	64253-0111-33	3mL fill in 12mL Syringe	60/Box, 960/case
MIS-1135	64253-0111-35	5mL fill in 12mL Syringe	60/Box, 960/case
MIS-1130	64253-0111-30	10mL fill in 12mL Syringe	60/Box, 960/case

### 1 USP Unit/mL Heparin I. V. Flush Syringes 510(k) K092491

Catalog #	NDC Number	Description	Box / Case Quantity
MIH-4422	64253-0444-22	2mL fill in 6mL Syringe	60/Box, 960/case
MIH-4425	64253-0444-25	5mL fill in 6mL Syringe	60/Box, 960/case

Heparin I.V. Flush Syringes in 0.9% Sodium Chloride

### 10 USP Units/mL Heparin I. V. Flush Syringes 510(k) K092491

Catalog #	NDC Number	Description	Box / Case Quantity
MIH-2221	64253-0222-21	1mL fill in 6mL Syringe	60/Box, 960/case
MIH-2223	64253-0222-23	3mL fill in 6mL Syringe	60/Box, 960/case
MIH-2233	64253-0222-33	3mL fill in 12mL Syringe	60/Box, 960/case
MIH-2235	64253-0222-35	5mL fill in 12mL Syringe	60/Box, 960/case

Heparin I.V. Flush Syringes in 0.9% Sodium Chloride

### 100 USP Units/mL Heparin I. V. Flush Syringes 510(k) K092491

Catalog #	NDC Number	Description	Box / Case Quantity
MIH-3321	64253-0333-21	1mL fill in 6mL Syringe	60/Box, 960/case
MIH-3323	64253-0333-23	3mL fill in 6mL Syringe	60/Box, 960/case
MIH-3333	64253-0333-33	3mL fill in 12mL Syringe	60/Box, 960/case
MIH-3335	64253-0333-35	5mL fill in 12mL Syringe	60/Box, 960/case

Heparin I.V. Flush Syringes in 0.9% Sodium Chloride



#### MEDEFIL, INC.

250 Windy Point Drive  
Glendale Heights Illinois 60139  
Phone (630) 682-4600  
Fax (630) 681-9100  
www.medefilinc.com

MED-12-001, Rev. 001, 07/2016

## Instructions for Use



Open using the perforation on the package.



With the tip cap of the syringe on, press the syringe forward to activate syringe.



Remove tip cap and prime the syringe luer.



Per Institution protocol, attach flush syringe to access device and flush.



Dispose of used syringe in an appropriate container.

Learn more about Medefil's **MedeFlush™** Products

Please call (630) 682-4600 or via e-mail at: [info@medefilinc.com](mailto:info@medefilinc.com)

Visit the company's website at [www.medefilinc.com](http://www.medefilinc.com)